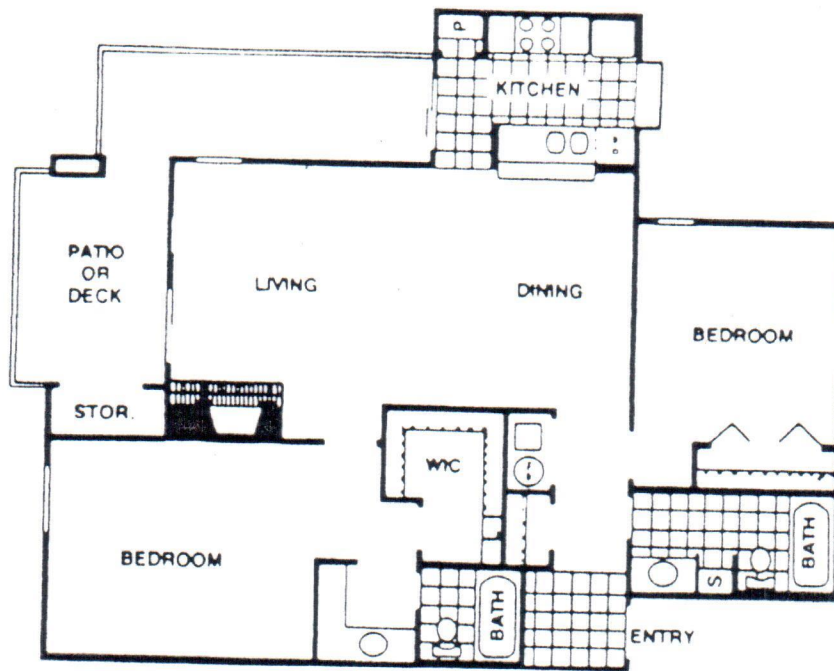


LAS CIMAS



1,154 Sq. Ft.

G

- Two bedroom, two bath
- Gracious private entry with large closet
- Dramatic living/dining area with stone-hearth fireplace
- Spacious wraparound patio/deck with access from kitchen and living area
- Fully appliance kitchen with roomy pantry, garden window and serve-thru bar to dining area
- Master bedroom suite has large separate dressing area with mirrored vanity, full private bath, and huge walk-in closet with built-in linen storage
- Second bath has separate mirrored vanity and linen closet
- Color-coordinated carpet, countertops and appliances with designer wallcovering accents in kitchen and bath
- This plan also available with vaulted ceilings (in top floor plans), bedroom ceiling fan and microwave oven